



**Customer:** Hemp of the Rockies  
**Address:** PO BOX 445  
Alma, CO 80420  
**Sample ID:** Almond Oil  
**Matrix:** Topical  
**Labnumber:** 24B0145-10

Density (g/mL): .8847

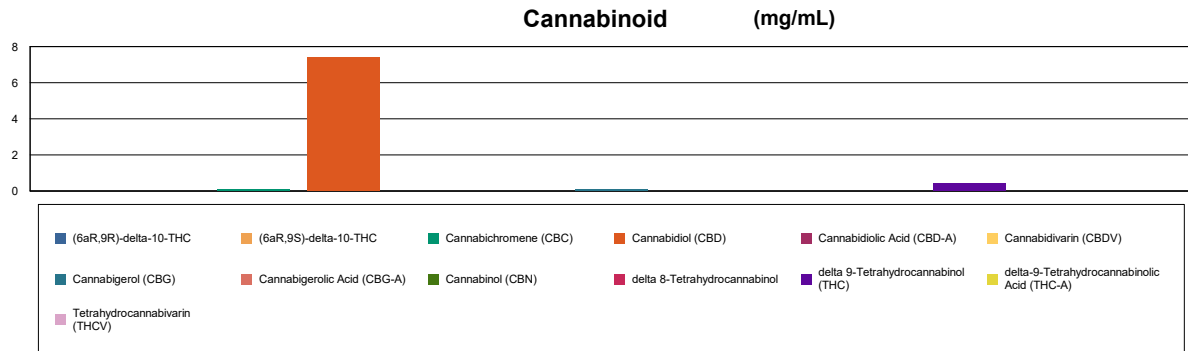
## Cannabinoid Profile

**Test Conditions:** 17°C  
**Extraction Technician:** SH  
**Analytical Chemist:** SH

Extraction Date(s)	Analysis Date(s)
2/26/2024	2/26/2024

Test Method: Cannabinoid Potency by HPLC		Results	
	LOD (mg/mL)	%	mg/mL
Cannabidivarin (CBDV)	<0.060		
Cannabidiolic Acid (CBD-A)	<0.060		
Cannabigerolic Acid (CBG-A)	<0.060		
Cannabigerol (CBG)		0.009	0.094
Cannabidiol (CBD)		0.74	7.38
Tetrahydrocannabivarin (THCV)	<0.060		
Cannabinol (CBN)	<0.060		
Cannabichromene (CBC)		0.01	0.109
delta 9-Tetrahydrocannabinol (THC)		0.04	0.449
delta-9-Tetrahydrocannabinolic Acid (THC-A)	<0.10		
delta 8-Tetrahydrocannabinol	<0.10		
(6aR,9S)-delta-10-THC	<0.10		
(6aR,9R)-delta-10-THC	<0.10		
<b>Cannabinoids Total</b>		<b>%</b>	<b>mg/mL</b>
Max Active THC (delta-9-tetrahydrocannabinol)		0.04	0.45
Max Active CBD		0.74	7.38
Total Cannabinoids		0.80	8.03

Following USDA guidelines on uncertainty, Altitude Consulting's uncertainty is calculated to be +/- 5% for all cannabinoids using a coverage factor of 2 (95% confidence interval). Measurement uncertainty has not been factored into reported values. Blank results indicate the compound was below the limit of detection.



END OF REPORT

END OF REPORT

**Gary Brook - Laboratory Director - 2/27/2024**

Reporting Limits will vary based on sample extraction weight used for the analysis.

The results of this report are based solely on the sample submitted and cannot be reproduced. Decision Rule: Measurement uncertainty is not accounted for in the reported values.

Results are based solely on calculated numbers. Altitude Consulting makes no Statements of conformity. Pesticide, metal, and microbial analyses are subcontracted to ISO

17025 laboratories.